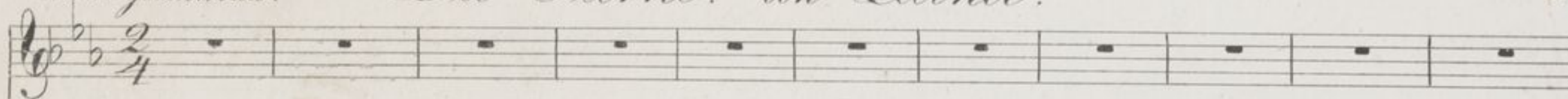


Alwas geschwind.

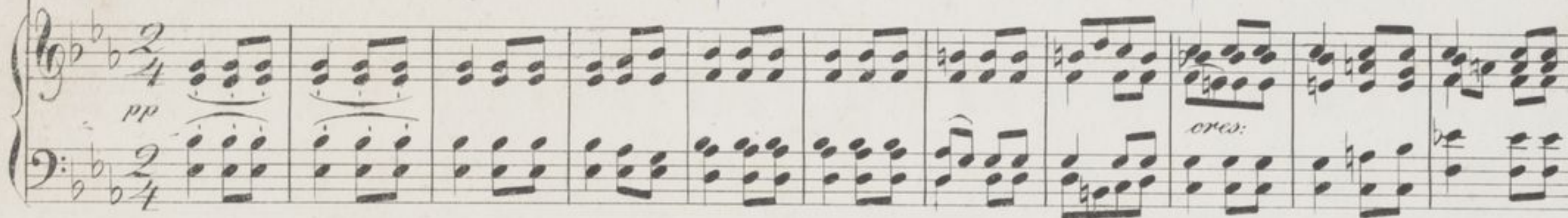
Die Sterne. von Leitner.

Voce



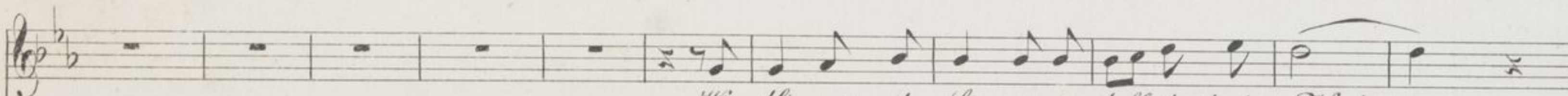
A single musical staff for the voice, containing ten measures of whole rests. The key signature has one flat (B-flat) and the time signature is 2/4.

Piano



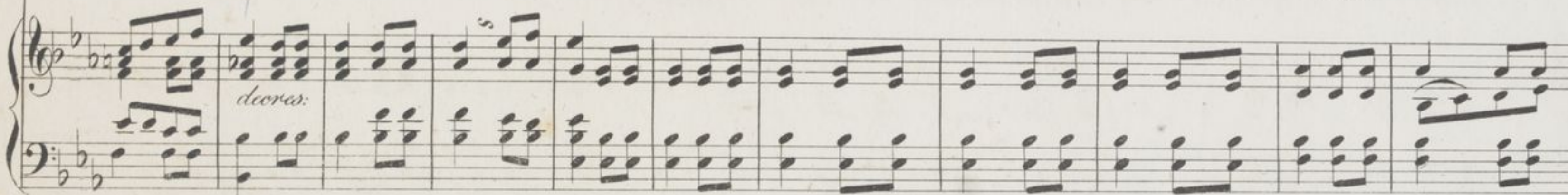
Piano accompaniment for the first system, consisting of two staves (treble and bass clef). The music features a steady eighth-note accompaniment in the right hand and a similar accompaniment in the left hand. Dynamics include *pp* (pianissimo) and *cres.* (crescendo).

Forte

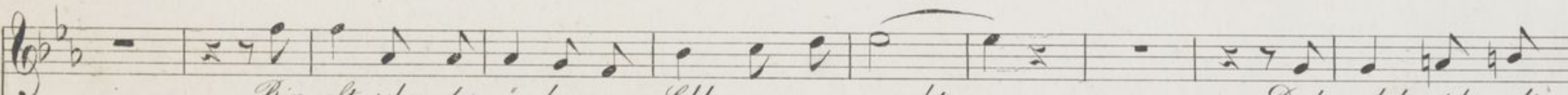


Vocal staff with lyrics: *Wie blit-zen die Ster-ne so hell durch die Nacht -*

Wie blit-zen die Ster-ne so hell durch die Nacht -



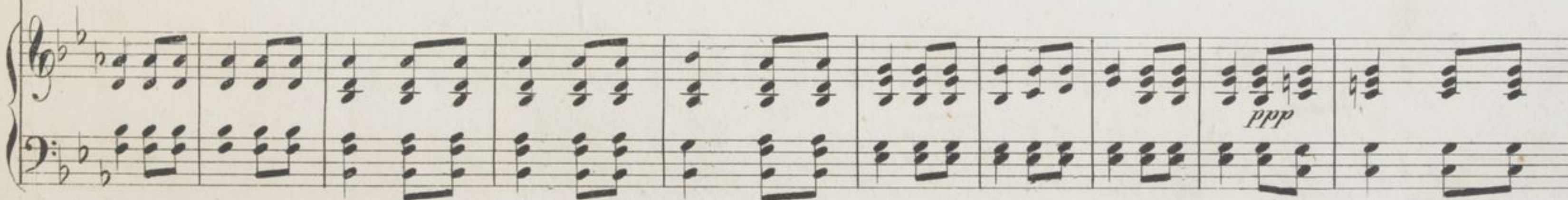
Piano accompaniment for the second system, continuing the eighth-note accompaniment. Dynamics include *decres.* (decrescendo).



Vocal staff with lyrics: *Bin oft schon dar-i-ber von Schlum-mer er--wacht -*

Bin oft schon dar-i-ber von Schlum-mer er--wacht -

Doch schelt ich die



Piano accompaniment for the third system, concluding the piece. Dynamics include *ppp* (pianississimo).

lich-ten Ge-bil--de drum nicht - sie ü-ben im Stil-len manch heil-sa--me

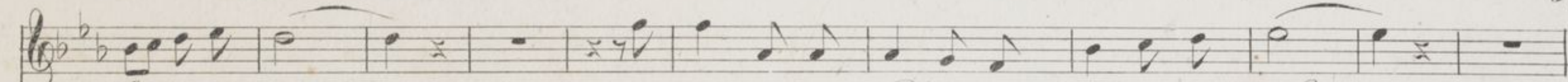
The first system consists of a vocal line on a single staff and a piano accompaniment on two staves. The vocal line begins with a treble clef, a key signature of one flat (B-flat), and a common time signature. The lyrics are written below the notes. The piano accompaniment features a steady eighth-note pattern in the right hand and a similar pattern in the left hand. A dynamic marking of *sp* (sforzando) is placed above the piano accompaniment in the fifth measure.

Pflicht sie ü-ben im Stil-len manch heil-sa-me Pflicht - .

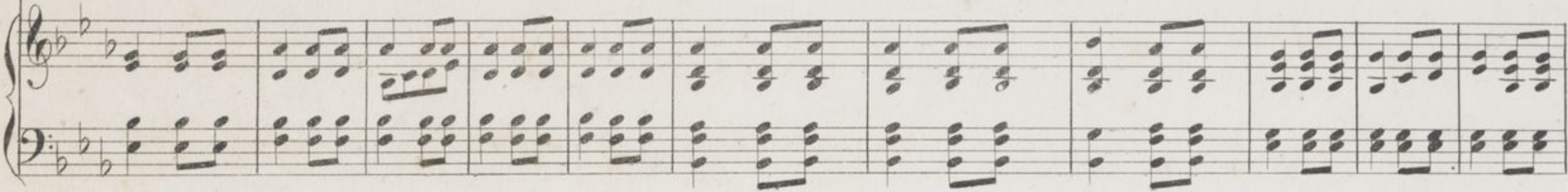
The second system continues the vocal line and piano accompaniment. The vocal line has a treble clef and a key signature of one flat. The lyrics are written below the notes. The piano accompaniment continues with the same rhythmic pattern. A dynamic marking of *mf* (mezzo-forte) is placed above the piano accompaniment in the fifth measure.

Sie wal-len hoch o-ben in

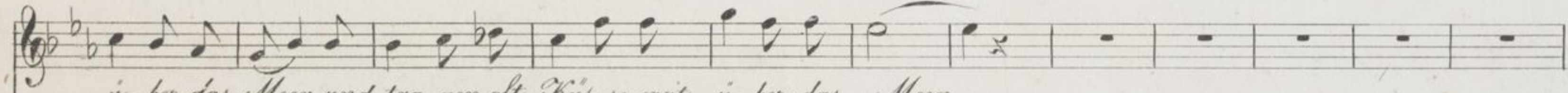
The third system continues the vocal line and piano accompaniment. The vocal line has a treble clef and a key signature of one flat. The lyrics are written below the notes. The piano accompaniment continues with the same rhythmic pattern. Dynamic markings of *ores:* and *Accres:* are placed above the piano accompaniment in the fifth and sixth measures, respectively.



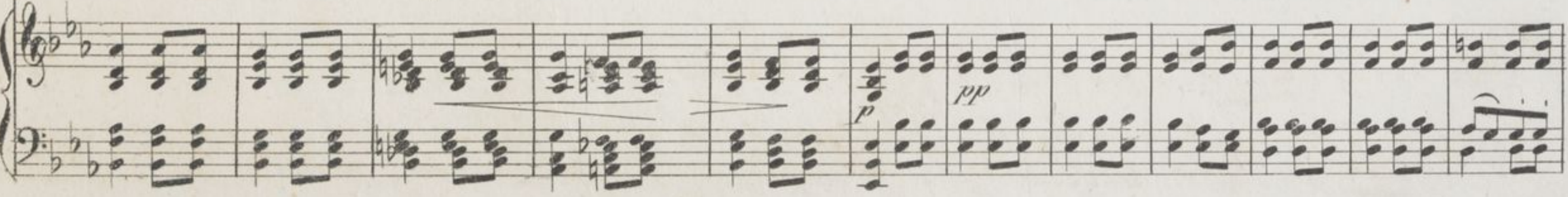
En-gel-ge stalt - sie leuch-ten dem Pil-ger durch Hei-den und Wald -



sie schwe-ben als Bo-then der Lie-be um her - und tra-gen oft Kus-se weit



ü-ber das Meer, und tra-gen oft Kus-se weit ü-ber das Meer -



Sie bli-cken dem Dul-der recht mild ins Ge-

cres. *decres.* *pp*

sicht - und säu-men die Thrä-nen mit sil-ber-nen Licht - . und wei-sen von

ppp

Grä-bern gar tröst-lich und hold - Uns hin-ter das Blau-e mit Fin-gern von Gold- uns hin-ter das
über *über*

fp

Blau e mit Fin-gern von Gold -

p *pp* *cres.* *decres.*

So sey den ge--seg-net, du strah-ti-ge Schaar -

p *pp*

und leuch-te mir lan-ge noch freund-lich und klar - Und wenn ich einst

ppp

6.

lie--be, seyd hold dem Ver---ein - seyd hold dem Ver---ein - - - und

The first system consists of a vocal line and a piano accompaniment. The vocal line is in a treble clef with a key signature of two flats (B-flat and E-flat) and a common time signature. It features a melodic line with some grace notes and a final cadence. The piano accompaniment is in a grand staff (treble and bass clefs) and consists of a steady eighth-note accompaniment in the bass and chords in the treble.

eu-er Ge-flim-mer lafst Se-gen uns seyn- und eu-er Ge--flim-men lafst Se--gen uns

The second system continues the vocal and piano parts. The vocal line has a similar melodic structure. The piano accompaniment includes dynamic markings: *sp* (sforzando) at the beginning, *cras:* (crescendo) in the middle, and *f* (forte) towards the end.

seyn. -

The third system concludes the piece. The vocal line ends with a long note and a fermata. The piano accompaniment features a *p* (piano) marking and ends with a *pp* (pianissimo) marking and a fermata.